

The background of the slide is a light beige color, decorated with a repeating pattern of stylized, abstract purple shapes. These shapes include various organic forms like leaves, droplets, and clusters of small circles, creating a decorative border around the central text.

Little Women (2019) Film Analysis

By: Lojain Abu Naser

Little Women (2019) Official Trailer



Little Women (2019)

Directed by **Greta Gerwig**

Film adaptation of the novel “Little Women” (1868) by Louisa May Alcott

Follows a **non-linear, character driven** narrative

Themes: family, self-sacrifice, women’s struggle with personal growth

Main Purpose: To show the realities of being a woman in the 19th century

Target Audience: Young adults (due to storyline and actors/actresses)



Little Women Movie Poster (2019)

Character Driven Plot



Little Women (2019)

Three Main Focuses

#1

Style of Directing

Narrative, lighting, and storyline choices.

#2

Mise-en- scene

Set design, costume design, and makeup choices.

#3

Camera Shots

Analyzing the acting, camera angles, and sound effect choices.

The background of the slide is a light beige color, decorated with a pattern of various purple shapes. These shapes include large, irregular blobs, smaller circles, and stylized, elongated forms that resemble leaves or petals. The overall effect is a soft, organic, and artistic border surrounding the central text.

#1

Style of Directing

Narrative, lighting, symbolism,
and storyline choices.

Creative Points - Narrative, Editing, and Lighting

- Does **not** follow common linear narrative.
- **Edited** so that the story intertwines past with present throughout (non-linear)
- Strong contrast is generated in between past and present.

Lighting in the Past



(Movieclips, 2020)

Lighting in the Past

- Bright and warm lighting
- Shows youthful, hopeful and innocent stages in life.



Little Women (2019)

Lighting in the Present



(Movieclips, 2020)

Lighting in the Present

- Dark and gloomy lighting
- Shows harsh realities of adulthood.



Little Women (2019)

Creative Points - Change in Plot

- Gerwig changes plot of original novel to better suit one of the main themes (women's personal growth in a male-favouring society).
 - E.g. Jo March marries professor Friedrich Bhaer despite saying that she never wanted to marry in the novel.
 - She does not get married to him at all and sticks to her word in the movie.
 - Gerwig adds a special twist at the end of the story that makes both the characters and the audience content.

The background of the slide is a light beige color, decorated with a pattern of various purple shapes. These shapes include large, irregular blobs, smaller circles, and stylized, elongated forms that resemble leaves or petals. The pattern is dense and covers the entire background.

#2

Mise-en-scene

Set design, costume design, and
makeup choices.

Victorian Era

- Mise-en-scene is very crucial to establish the time and setting of the film (Victorian Era - 1868)
- All the elements of the film need to mimic the aesthetics of this time period.



(History.com Editors, 2019)

Set Design



March Family's Set
Design

Little Women (2019)



Laurie's Home Set
Design

Costumes and Makeup

- The women in the Victorian era wore dresses made out of a lot of layers.
- Since the March sisters were considered poor they would wear more casual fitted dresses.
- Laurie would wear a linen shirt with a collar and a velvet coat since he was wealthy.
- Very minimal makeup on characters since it was frowned upon to apply heavy makeup in this era (*Victorian Era Makeup - The Fashion Folks*, 2016).
- Combination of these elements tells the viewer that this story is set in the Victorian era without needing to be clearly stated.

Costume Design



Little Women (2019)

March Sister's
Costume Design



Laurie's Costume
Design

Minimal Makeup



Little Women (2019)

The background is a light beige color with a decorative border of purple abstract shapes, including hands and organic forms. In the center, the text "#3" is displayed in a black serif font, enclosed within a light purple circle.

#3

Camera Shots

Analyzing the acting, camera angles, and sound effect choices.

Acting - Laurie Confessing his Love to Jo



(Movieclips, 2020)

Laurie Confessing to Jo

- **Long-shot:** shows the audience Laurie's reaction to her rejection (walking away upset while she is trying to reassure him) - great acting.
- **Medium shot:** used to focus on their dialogue and their facial expressions during this scene.
- **Non-diegetic music:** sad, plays when Laurie walks away from the scene to emphasize the last time he will see Jo in a while.
- **Extreme long shot:** visualizes Jo's loneliness after she had just lost her best friend.



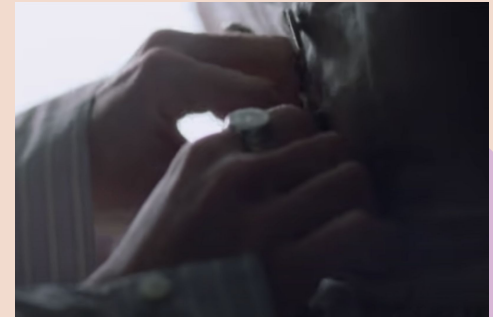
Acting - Amy Speaking to Laurie About the Realities of Marriage



(Movieclips, 2020)

Amy Speaking to Laurie

- **Medium shot:** Used back in forth to deliver dialogue. Shows character reactions and acting.
- Camera follows Amy as she delivers her monologue and stops at a **close-up shot**.
 - Laurie is purposely barely shown since this issue is only relevant to her as a woman.
- **No non-diegetic sounds** - no distractions during serious moment.
- Dialogue abruptly ends when **diegetic sounds** of horses appear.
- **Close-up shot:** to emphasize the intimate moment Laurie and Amy are having as he is unbuttoning her apron.
- **Gentle non-diegetic music** plays in combination with diegetic sounds of the birds tweeting = peaceful, romantic atmosphere.
- These elements tells the audience that Laurie might be falling in love with Amy.



Strengths and Weaknesses

Strengths:

- Acting was realistic and believable (talented actors/actresses).
- Mise-en-scene appropriately represented the Victorian Era.
- Unique narrative style.
- Stuck to novel, however, changed the ending to stay consistent to themes.

Weaknesses:

- Back and forth narrative style is confusing to some.
- Characters looked relatively similar in the past as children and in the future as young adults.

Conclusion

- The film's use of specific directing styles, appropriate mise-en-scene, and meaningful camera shots create a story that allows the audience to be integrated into the character's life.
- These elements all together can send a message to the viewer about the time and place of the story, the motivations of the characters, as well as how the characters are feeling.
- Without these important techniques, the audience would not be able to understand the story and relate or feel for the characters.

Bibliography

Gerwig, G. (Director). (2019). *Little Women* [Film]. Columbia Pictures,

Grady, C. (2019, December 27). *Greta Gerwig's Little Women doesn't pretend its marriages are romantic*. Vox; Vox.
<https://www.vox.com/culture/2019/12/27/21037870/little-women-greta-gerwig-ending-jo-laurie-amy-bhaer>

History.com Editors. (2019, March 15). *Victorian Era Timeline*. HISTORY; HISTORY.
<https://www.history.com/topics/19th-century/victorian-era-timeline>

Movieclips. (2020). Little Women (2019) - Beth's Last Christmas Scene (5/10) | Movieclips [YouTube Video]. In *YouTube*.
https://www.youtube.com/watch?v=zPqBVU22fRs&ab_channel=Movieclips

Movieclips. (2020). Little Women (2019) - Jo & Laurie Dance Scene (1/10) | Movieclips [YouTube Video]. In *YouTube*.
https://www.youtube.com/watch?v=t86vvCy1yq0&ab_channel=Movieclips

Movieclips. (2020). Little Women (2019) - Laurie Proposes to Jo Scene (6/10) | Movieclips [YouTube Video]. In *YouTube*.
https://www.youtube.com/watch?v=3cEg2HCl50I&t=116s&ab_channel=Movieclips

Movieclips. (2020). Little Women (2019) - Marriage Is an Economic Proposition Scene (3/10) | Movieclips [YouTube Video]. In *YouTube*. https://www.youtube.com/watch?v=0D8nRpJsQlk&t=87s&ab_channel=Movieclips

Nicolaou, E. (2019, December 27). *Why Greta Gerwig's Little Women Movie Radically Changed the Book's Ending*. Oprah Daily; Oprah Daily. <https://www.oprahdaily.com/entertainment/a30186941/little-women-ending/>

Victorian Era Makeup - The Fashion Folks. (2016, July 14). The Fashion Folks.
<https://www.thefashionfolks.com/blog/victorian-era-makeup/>